

BORA Classic 2.0 CKG
[> Web link](#)

Brief description
 Gas cooktop

Article no.
 40.002.160.00

VRG
 2.31

Price CHF
 2199.- O excl. VAT

Product description
Technical data
Supply voltage

230 V

Frequency

50 Hz

Maximum performance

5 kW

Maximum connection value

20 W

Fuse protection

1 x 0.5 A

Power levels

1 - 9, P

Weight (incl. accessories / packaging)

10,8 kg

Material surface

SCHOTT CERAN

Mains connection

1.5 m

Dimensions (W x D x H)

327 x 515 x 73 mm

High speed burner

800 - 3000 W

Normal burner

550 - 2000 W

Front cooking zone size

240 mm

Rear cooking zone size

200 mm

Pan support high speed burner

270 x 270 x 25 mm

Pan support high normal burner

235 x 270 x 25 mm

Product description

2 flame gas ceramic glass cooktop with high speed and normal burner

Pan support removable and dishwasher safe

Automatic relighting

Keep warm function

Power level

Residual heat indicator

Pause function

Timer function

Configuration menu

Can be mounted rotated 180°

Cooking zone display on control knob

Demo mode

Automatic cooking system

Digital power stage display on control knob

Child safety

Safety switch off

Scope of delivery

Gas ceramic glass cooktop CKG

Mounting brackets

2 x cast pan supports

Nozzle set G 20/20 mbar natural gas PKGDS2020

Height adjustment plate set

Operating and installation instructions

Mains connection 1.5 m (L, N, PE), without plug

Cylindrical-conical transition piece

BORA Classic 2.0 CKG

[> Web link](#)

Sealing band

Planning guidelines

Gas connection hose to be provided by customer (thread diameter 1/2" cylindrical)

Please provide sufficient ventilation below the gas cooktop. Either via the carcass front (opening cross section > 50 cm²) or via the base area opening cross section > 150 cm²

Provide a return port (opening cross section > 1000 cm²) per air cleaning unit)) for the air return of the circulating air in the base area

Adhere to the locally valid regulations and connection conditions for gas cooktops

Adhere to the special mounting and processing guidelines for the gas cooktop PKG11 (see operating and installation instructions)

When operating the gas cooktop with a cooktop extractor, the gas flame can be influenced (depending on the power level on the cooktop extractor)

Accessory

You can find the complete range of accessories here [> Weblink](#)

Optional accessories



40.001.767.00 / CHF 97.-
BORA socket USTJ



40.002.034.00 / CHF 135.-
BORA socket USTJAB
All Black



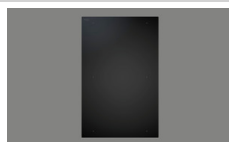
40.001.775.00 / CHF 19.-
BORA Glass ceramic
scraper UGS

Other Articles

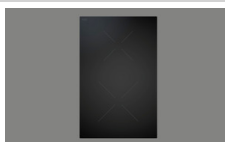
You can find additional articles here [> Weblink](#)



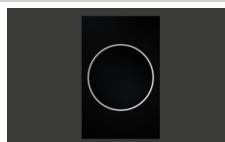
40.002.245.00 / CHF 2004.-
BORA Classic 2.0
CKA2AB All Black



40.002.057.00 / CHF 1486.-
BORA Classic 2.0 CKFI



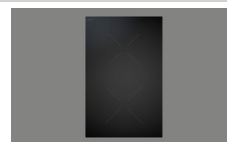
40.002.058.00 / CHF 1293.-
BORA Classic 2.0 CKI



40.002.059.00 / CHF 2434.-
BORA Classic 2.0 CKIW
Induction Glass Ceramic
Wok



40.002.081.00 / CHF 3034.-
BORA Classic 2.0 Set
CKIW + HIW1 (wok pan
with lid)



40.002.055.00 / CHF 1010.-
BORA Classic 2.0 CKCH



40.002.056.00 / CHF 1107.-
BORA Classic 2.0 CKCB



40.002.160.00 / CHF 2199.-
BORA Classic 2.0 CKG



40.002.060.00 / CHF 2601.-
BORA Classic 2.0 CKT



40.002.302.00 / CHF 3001.-
BORA Classic 2.0 Set:
CKA2AB and ULS



40.002.084.00 / CHF 2858.-
BORA Classic 2.0 Set:
CKA2 und ULS



40.001.966.00 / CHF 5830.-
BORA Classic 2.0 Set:
CKA2 und 2 x CKFI



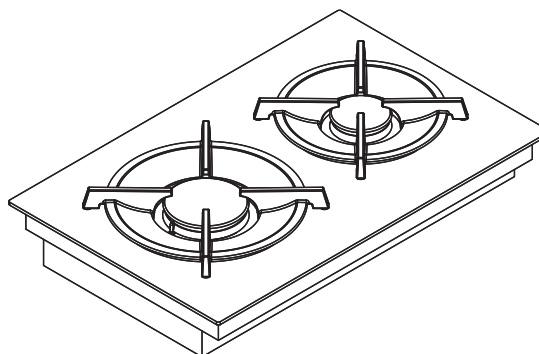
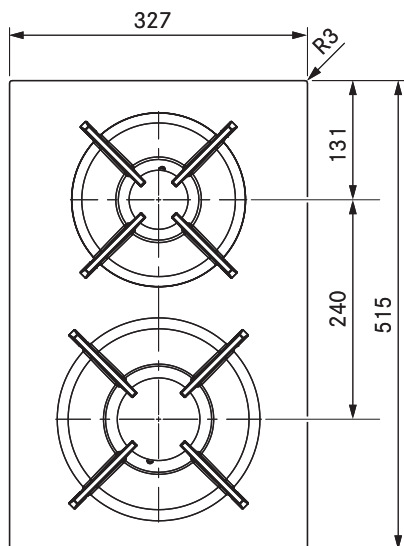
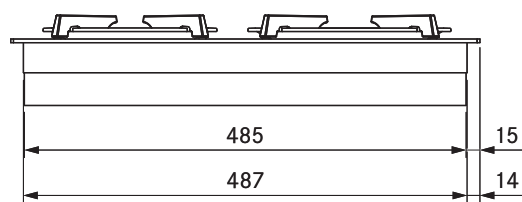
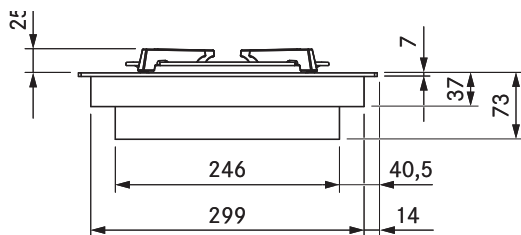
40.001.969.00 / CHF 4975.-
BORA Classic 2.0 Set:
CKA2, CKCH und CKCB



40.002.285.00 / CHF 5973.-
BORA Classic 2.0 Set:
CKA2AB and 2 x CKFI



40.002.286.00 / CHF 5118.-
BORA Classic 2.0 Set:
CKA2AB, CKCH and
CKCB



Technical data

Supply voltage	220 - 240 V
Frequency	50/60 Hz
Maximum power consumption	5.0 kW
Maximum power rating	20 W
Minimum fuse protection	1 x 0.5 A
Power supply cable length	1,5 m
Dimensions (width x depth x height)	327 x 515 x 73 mm
Weight (incl. accessories/packaging)	10.8 kg
Surface material	SCHOTT CERAN®
Cooktop power levels	1 - 9, P
Size of front cooking zone	Ø 240 mm
Size of rear cooking zone	Ø 200 mm
Front cooking zone output (power burner)	800-3000 W
Rear cooking zone output (normal burner)	550-2000 W
Size of front pan support	270 x 270 x 25/50 mm
Size of rear pan support	235 x 235 x 25/50 mm

Product description

- Compact size
- Minimalistic design
- Modular system
- Sunken gas burners
- Variable heat retention function
- Automatic reignition
- Dishwasher-safe pan supports
- automatic heat up function
- low pan support height
- Demo mode

Scope of delivery

- Gas cooktop CKG
- 2 x cast iron pan supports
- Nozzle set G20/20mbar natural gas
- Flexible gas connection tube, length 500 mm, 1/2" external thread
- mounting straps
- height adjustment plate set

Accessories

- BORA gas nozzle set natural gas G20/10 mbar PKGDS2010
- BORA gas nozzle set natural gas G20/13 mbar PKGDS2013
- BORA gas nozzle set natural gas G20/20 mbar PKGDS2020
- BORA gas nozzle set natural gas G25/20 mbar PKGDS2520
- BORA gas nozzle set natural gas G20/25 mbar PKGDS2025
- BORA gas nozzle set natural gas G25/25 mbar PKGDS2525
- BORA gas nozzle set liquid gas G30/G31 28-30/37 mbar PKGDS3028
- BORA gas nozzle set liquid gas G30/G31 50 mbar PKGDS3050
- BORA burner set PKGBS
- BORA pan support small PKGTK
- BORA pan support large PKGTG

product- and planning instructions

- Ensure sufficient air supply below the gas cooktop. Either over the front of the body (opening cross-section > 50 cm²) or over the plinth area (opening cross-section > 150 cm²)
- Provide a return flow aperture (opening cross-section > 1000 cm² per air cleaning unit) for recirculation in the plinth area
- Please note the local regulations and connection requirements applicable to gas cooktops
- Please take into account the special guidelines regarding the assembly and use of gas cooktop CKG (see operating and installation instructions)
- When operating a gas cooktop with a cooktop extractor, the gas flame can be affected (depending on the height of the power level on the cooktop extractor)
- The performance characteristics of the gas cooktop (e.g. heating times, efficiency, etc.) are affected by the cooktop extractor. The cooktop extractor also affects the heat input and distribution
- If the gas cooktop is used in a model with two cooktop extractors, it is to be installed at the side
- Minimum requirement for operating gas cooktop CKG: System software 03.00 (or higher)