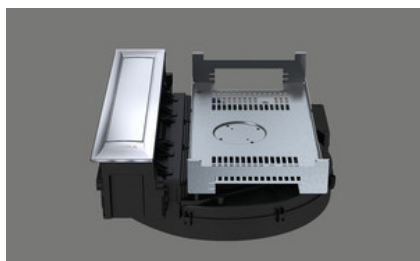


BORA hob extraction system PKAS3, Professional 3.0
[> Web link](#)

Brief description

Extraction system

Mode of operation

Recirculated-air or exhaust air

Article no.

40.002.233.00

VRG

2.31

Price CHF

3229.- O excl. VAT

Product description
Product description BORA Professional 3.0 hob extraction system PKAS3

The PKAS3 is a compact system in which the fan motor and hob extractor form a single unit.

Power control via control knob

Power level indicator

Electric shutter

Shutter sensor

Stainless steel grease filter

Grease filter sensor

Automatic hob extractor

Automatic run-on

Filter service indicator

Interface for external devices

Safety shut-off

Connection option for an additional BORA fan module

Technical data

Supply voltage

220 - 240 V

Frequency

50 Hz

Maximum power consumption

550 W

Weight (incl. accessories and packaging)

12.5 kg

Dimensions (width x depth x height)

468 x 540 x 199 mm

Power levels

1-9, P

Exhaust air connection

BORA Ecotube 245 x 89 mm

Scope of delivery

PKAS3 hob extraction system incl. fan motor

Operating and installation instructions

Height compensation plate set

Mounting clamps

Control knob

Stainless steel grease filter

Filter tray

Maintenance tray

Closing flap

Cable control knob - interface/extractor

Mains cable 1 m with plug type 12, 10 A

Planning information

Possible as recirculation or exhaust air system

Can be combined with all BORA Professional hobs and BORA Universal fan modules

Worktop height can be individually adjusted

 Worktop depth: ≥ 700

Type of installation: flush-mounted or top unit

The drawers or shelves in the base unit must be removable for maintenance and cleaning purposes.

The BORA Ecotube duct system is optimally matched to the BORA hob extractors and guarantees 100% function and best performance. An additional universal fan module must be used if the exhaust air path is longer than 6 m or if there are high pressure losses.

Exhaust air routing only possible to the right

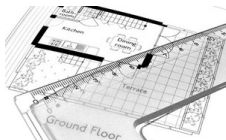
Planning note: With these units, the duct connection is designed for the BORA Ecotube duct system. To connect BORA Ecotube (connection 245 x 89 mm) with Naber connections (222 x 89 mm), an adapter (EFA, 40.001.779.00) is available / can be ordered separately.

BORA hob extraction system PKAS3, Professional 3.0
[> Web link](#)
Accessory

 You can find the complete range of accessories here [> Weblink](#)

Optional accessories


 40.001.767.00 / CHF 97.-
BORA socket USTJ

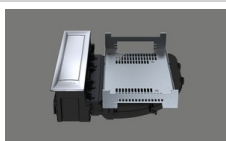
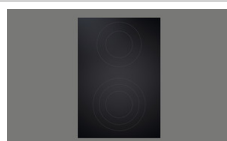
 40.002.034.00 / CHF 135.-
BORA socket USTJAB All Black

 80.100.016.00 / CHF 359.-
Ventilation planning

 80.100.017.00 / CHF 192.-
Revision of the planning

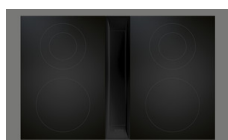
Other Articles

 You can find additional articles here [> Weblink](#)

 40.002.292.00 / CHF 9632.-
BORA Set PKA3 + PKFI3 + PKT3, Professional 3.0

 40.002.294.00 / CHF 7067.-
BORA Set PKA3 + 2x PKCH3, Professional 3.0

 40.002.231.00 / CHF 2152.-
BORA hob extractor PKA3, Professional 3.0

 40.002.532.00 / CHF 1730.-
HiLight Professional Cooktop All Black

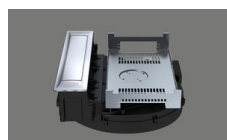
 40.002.291.00 / CHF 10341.-
BORA Set PKA3AB + 2x PKFI3 Professional 3.0

 40.002.293.00 / CHF 10852.-
BORA Set PKA3AB + PKFI3 + PKT3, Professional 3.0

 40.002.295.00 / CHF 8287.-
BORA Set PKA3AB + 2x PKCH3, Professional 3.0

 40.002.232.00 / CHF 3006.-
BORA hob extractor PKA3AB All Black, Professional 3.0

 40.002.296.00 / CHF 8377.-
BORA Set PKAS3 + 2x PKFI3 Professional 3.0

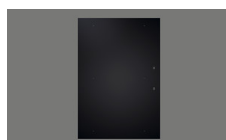
 40.002.298.00 / CHF 8888.-
BORA Set PKAS3 + PKFI3 + PKT3, Professional 3.0

 40.002.300.00 / CHF 6323.-
BORA Set PKAS3 + 2x PKCH3, Professional 3.0

 40.002.233.00 / CHF 3229.-
BORA hob extraction system PKAS3, Professional 3.0

 40.002.297.00 / CHF 9597.-
BORA Set PKAS3AB + 2x PKFI3AB Professional 3.0

 40.002.299.00 / CHF 10108.-
BORA Set PKAS3AB + PKFI3 + PKT3, Professional 3.0

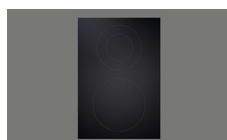
 40.002.301.00 / CHF 7543.-
BORA Set PKAS3AB + 2x PKCH3, Professional 3.0

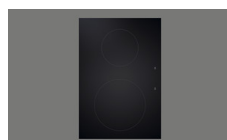
 40.002.234.00 / CHF 4083.-
BORA hob extraction system PKAS3AB All Black, Professional 3.0

 40.002.239.00 / CHF 2574.-
BORA PKFI3 surface induction glass ceramic hob, Professional 3.0

 40.002.535.00 / CHF 2757.-
BORA PKFI3AB surface induction glass ceramic hob, Professional 3.0, All Black

 40.002.242.00 / CHF 3085.-
BORA PKT3 Teppan stainless steel grill, Professional 3.0

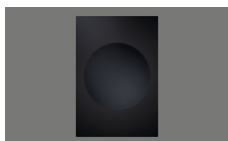
 40.002.539.00 / CHF 3268.-
BORA PKT3AB Teppan stainless steel grill, Professional 3.0, All Black

 40.002.237.00 / CHF 1547.-
BORA PKCH3 Hyper glass ceramic hob, Professional 3.0

 40.002.534.00 / CHF 1730.-
BORA PKCH3AB Hyper glass ceramic hob, Professional 3.0, All Black

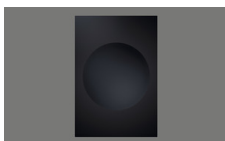
 40.002.288.00 / CHF 3973.-
BORA Set PKA3 + ULS, Professional 3.0

 40.002.238.00 / CHF 2238.-
BORA PKI3 induction glass ceramic hob, Professional 3.0

BORA hob extraction system PKAS3, Professional 3.0
[> Web link](#)

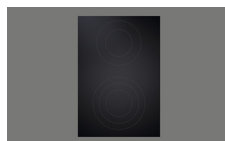

40.002.537.00 / CHF
2421.-
BORA PKI3AB induction
glass ceramic hob,
Professional 3.0, All
Black



40.002.240.00 / CHF
2767.-
BORA PKIW3 Induction
Glass Ceramic Wok,
Professional 3.0



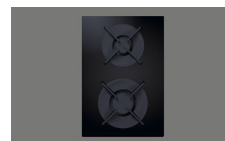
40.002.538.00 / CHF
2950.-
BORA PKIW3AB
Induction Glass Ceramic
Wok, Professional 3.0,
All Black



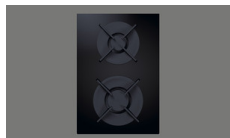
40.002.235.00 / CHF
1547.-
BORA PKC3 HiLight
glass ceramic hob,
Professional 3.0



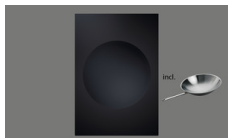
40.002.289.00 / CHF
4827.-
BORA Set PKA3AB +
ULS, Professional 3.0



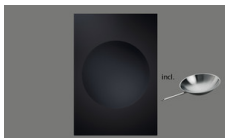
40.002.241.00 / CHF
2771.-
BORA PKG3 gas glass
ceramic hob,
Professional 3.0



40.002.536.00 / CHF
2954.-
BORA PKG3AB gas
glass ceramic hob,
Professional 3.0, All
Black



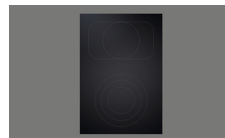
40.002.287.00 / CHF
3367.-
BORA Set PKIW3 +
HIW1, Professional 3.0



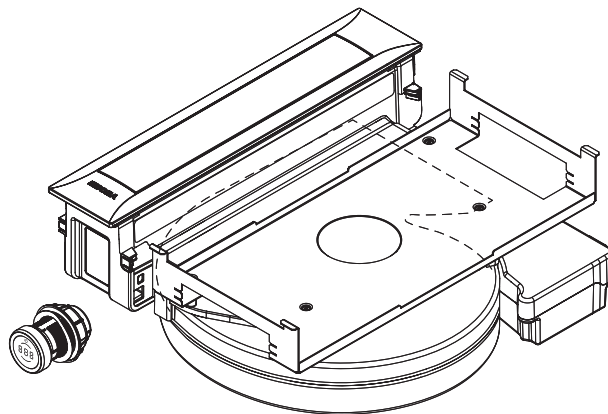
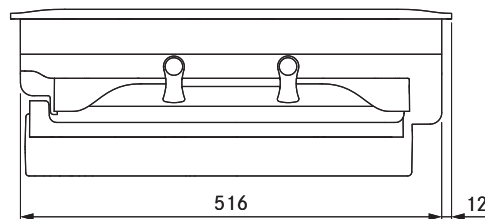
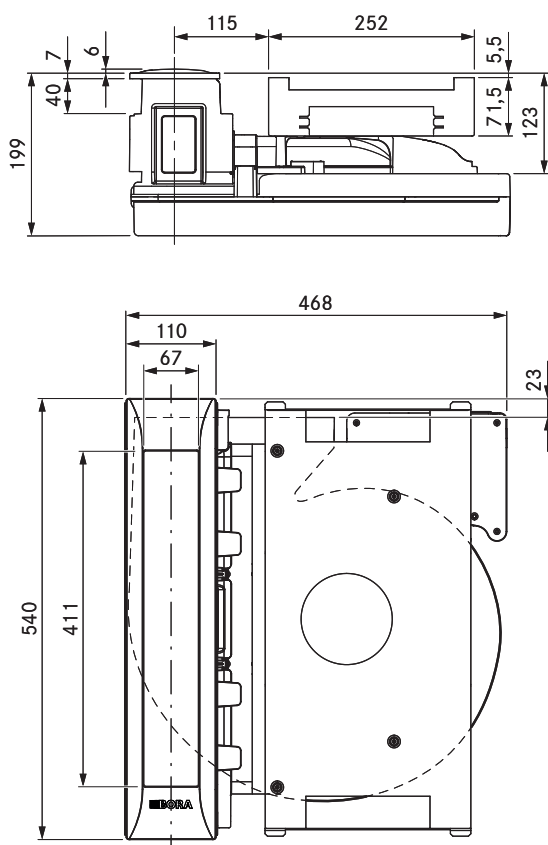
40.002.552.00 / CHF
3550.-
BORA Set PKIW3AB +
HIW1, Professional 3.0,
All Black



40.002.236.00 / CHF
1583.-
BORA PKCB3 HiLight
glass ceramic hob,
Professional 3.0



40.002.533.00 / CHF
1766.-
BORA PKCB3AB HiLight
glass ceramic hob,
Professional 3.0, All
Black



technical data

Supply voltage	220 – 240 V
Frequency	50/60 Hz
Maximum power consumption	550 W
Power supply cable length	2 m
Dimensions (width x depth x height)	468 x 540 x 199 mm
Weight (incl. accessories/packaging)	12.5 kg
Cooktop extractor power levels	1 – 9, P
duct connection	BORA Ecotube

Product description

- Intuitive control knob
- Automatic cover flap
- Premium design
- Simple cleaning
- Integrated grease drip pan
- Genuine stainless steel grease filter
- Modular system
- Automatic extractor control
- Maximum storage space
- Integrated fan

Scope of delivery

- Cooktop extractor system with integrated fan PKAS3
- Control knob
- stainless steel grease filter
- Filter tray
- Maintenance tray
- cover flap
- connection cable for the control knob
- operating and installation instructions
- height adjustment plate set
- Mounting clamps
- Power supply cable with type E + F plugs

Accessories

- PKA1FF stainless steel grease filter
- PKA1VK cover flap
- PKA1FW filter tray
- UNLI type I power supply cable (AUS)
- UNLJ type J power supply cable (CH)
- UNLG type G power supply cable (GB-IE)
- UNLB type B power supply cable (PH)
- UNLH type H power supply cable (IL)

product- and planning instructions

- Suitable for use as a recirculation or exhaust system
- Compatible with all BORA Professional 3.0 cooktops and BORA Universal fan modules
- Use of an additional fan module is possible for very long or complex exhaust air channels
- The worktop height can be adjusted as necessary
- Worktop depth: ≥ 700 mm
- Installation type: flush or surface-mounted
- The drawers and/or shelves in the floor unit must be removable for maintenance and cleaning purposes
- The BORA Ecotube duct system is optimally tailored to the BORA cooktop extractors and guarantees 100% functionality and optimum performance
- The Professional cooktop extractor system can be combined with all BORA sockets
- Duct connection on the back of the appliance