

BORA hob extraction system PKAS3AB All Black, Professional 3.0
[> Web link](#)

Brief description

Extraction system

Mode of operation

Recirculated-air or exhaust air

Article no.

40.002.234.00

VRG

2.31

Price CHF

4083.- O excl. VAT

Product description
Product description BORA Professional 3.0 hob extraction system PKAS3AB All Black

The PKAS3AB is a compact system in which the fan motor and hob extractor form a single unit.

Power control via control knob

Power level indicator

Electric shutter

Shutter sensor

Stainless steel grease filter

Grease filter sensor

Automatic hob extractor

Automatic run-on

Filter service indicator

Interface for external devices

Safety shut-off

Connection option for an additional BORA fan module

All Black Version, DLC coated

Technical data

Supply voltage

220 - 240 V

Frequency

50 Hz

Maximum power consumption

550 W

Weight (incl. accessories and packaging)

12.5 kg

Dimensions (width x depth x height)

468 x 540 x 199 mm

Power levels

1-9, P

Exhaust air connection

BORA Ecotube 245 x 89 mm

Scope of delivery

PKAS3 hob extraction system incl. fan motor

Operating and installation instructions

Height compensation plate set

Mounting clamps

Control knob All Black

Stainless steel grease filter

Filter tray

Maintenance tray

Closing flap

Cable control knob - interface/extractor

Mains cable 1 m with plug type 12, 10 A

Planning information

Possible as recirculation or exhaust air system

Can be combined with all BORA Professional hobs and BORA Universal fan modules

Worktop height can be individually adjusted

 Worktop depth: ≥ 700

Type of installation: flush-mounted or top unit

The drawers or shelves in the base unit must be removable for maintenance and cleaning purposes.

The BORA Ecotube duct system is optimally matched to the BORA hob extractors and guarantees 100% function and best performance. An additional universal fan module must be used if the exhaust air path is longer than 6 m or if there are high pressure losses.

Exhaust air routing only possible to the right

Planning note: With these units, the duct connection is designed for the BORA Ecotube duct system. To connect BORA Ecotube (connection 245 x 89 mm) with Naber connections (222 x 89 mm), an adapter (EFA, 40.001.779.00) is available / can be ordered separately.

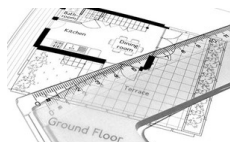
BORA hob extraction system PKAS3AB All Black, Professional 3.0
[> Web link](#)
Accessory

 You can find the complete range of accessories here [> Weblink](#)

Optional accessories



40.002.034.00 / CHF
135.-
BORA socket USTJAB
All Black



80.100.016.00 / CHF
359.-
Ventilation planning



80.100.017.00 / CHF
192.-
Revision of the planning

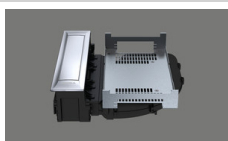
Other Articles

 You can find additional articles here [> Weblink](#)

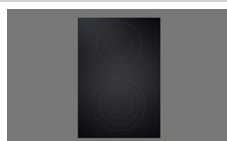

40.002.292.00 / CHF
9632.-
BORA Set PKA3 +
PKFI3 + PKT3,
Professional 3.0



40.002.294.00 / CHF
7067.-
BORA Set PKA3 + 2x
PKCH3, Professional 3.0



40.002.231.00 / CHF
2152.-
BORA hob extractor
PKA3, Professional 3.0



40.002.532.00 / CHF
1730.-
HiLight Professional
Cooktop All Black



40.002.291.00 / CHF
10341.-
BORA Set PKA3AB + 2 x
PKFI3 Professional 3.0



40.002.293.00 / CHF
10852.-
BORA Set PKA3AB +
PKFI3 + PKT3,
Professional 3.0



40.002.295.00 / CHF
8287.-
BORA Set PKA3AB + 2x
PKCH3, Professional 3.0



40.002.232.00 / CHF
3006.-
BORA hob extractor
PKA3AB All Black,
Professional 3.0



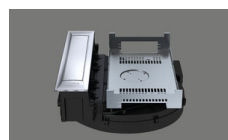
40.002.296.00 / CHF
8377.-
BORA Set PKAS3 + 2x
PKFI3 Professional 3.0



40.002.298.00 / CHF
8888.-
BORA Set PKAS3 +
PKFI3 + PKT3,
Professional 3.0



40.002.300.00 / CHF
6323.-
BORA Set PKAS3 + 2x
PKCH3, Professional 3.0



40.002.233.00 / CHF
3229.-
BORA hob extraction
system PKAS3,
Professional 3.0



40.002.297.00 / CHF
9597.-
BORA Set PKAS3AB +
2x PKFI3AB Professional
3.0



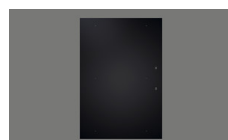
40.002.299.00 / CHF
10108.-
BORA Set PKAS3AB +
PKFI3 + PKT3,
Professional 3.0



40.002.301.00 / CHF
7543.-
BORA Set PKAS3AB +
2x PKCH3, Professional
3.0



40.002.234.00 / CHF
4083.-
BORA hob extraction
system PKAS3AB All
Black, Professional 3.0



40.002.239.00 / CHF
2574.-
BORA PKFI3 surface
induction glass ceramic
hob, Professional 3.0



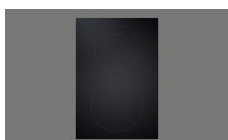
40.002.535.00 / CHF
2757.-
BORA PKFI3AB surface
induction glass ceramic
hob, Professional 3.0, All
Black



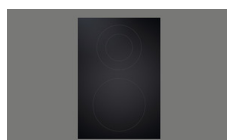
40.002.242.00 / CHF
3085.-
BORA PKT3 Teppan
stainless steel grill,
Professional 3.0



40.002.539.00 / CHF
3268.-
BORA PKT3AB Teppan
stainless steel grill,
Professional 3.0, All
Black



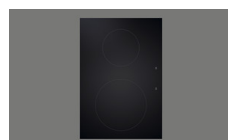
40.002.237.00 / CHF
1547.-
BORA PKCH3 Hyper
glass ceramic hob,
Professional 3.0



40.002.534.00 / CHF
1730.-
BORA PKCH3AB Hyper
glass ceramic hob,
Professional 3.0, All
Black



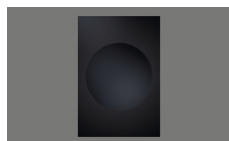
40.002.288.00 / CHF
3973.-
BORA Set PKA3 + ULS,
Professional 3.0



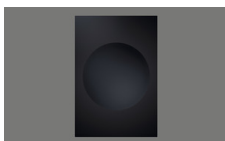
40.002.238.00 / CHF
2238.-
BORA PKI3 induction
glass ceramic hob,
Professional 3.0

BORA hob extraction system PKAS3AB All Black, Professional 3.0
[> Web link](#)

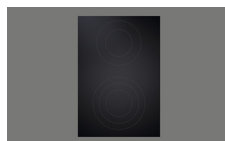

40.002.537.00 / CHF
2421.-
BORA PKI3AB induction
glass ceramic hob,
Professional 3.0, All
Black



40.002.240.00 / CHF
2767.-
BORA PKIW3 Induction
Glass Ceramic Wok,
Professional 3.0



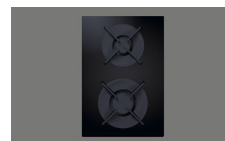
40.002.538.00 / CHF
2950.-
BORA PKIW3AB
Induction Glass Ceramic
Wok, Professional 3.0,
All Black



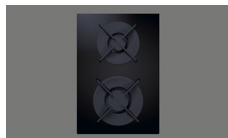
40.002.235.00 / CHF
1547.-
BORA PKC3 HiLight
glass ceramic hob,
Professional 3.0



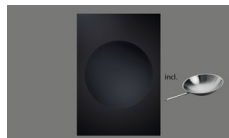
40.002.289.00 / CHF
4827.-
BORA Set PKA3AB +
ULS, Professional 3.0



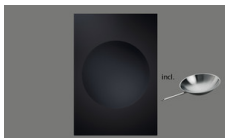
40.002.241.00 / CHF
2771.-
BORA PKG3 gas glass
ceramic hob,
Professional 3.0



40.002.536.00 / CHF
2954.-
BORA PKG3AB gas
glass ceramic hob,
Professional 3.0, All
Black



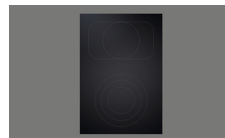
40.002.287.00 / CHF
3367.-
BORA Set PKIW3 +
HIW1, Professional 3.0



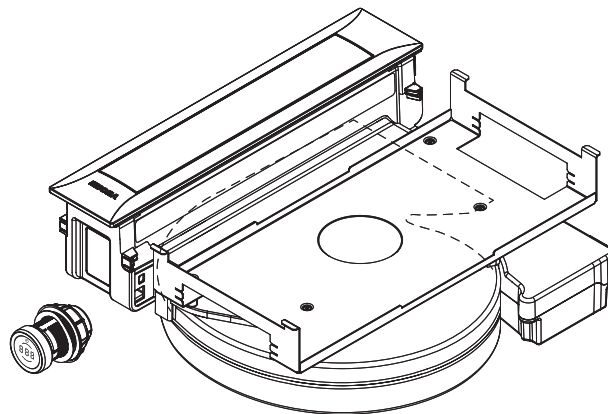
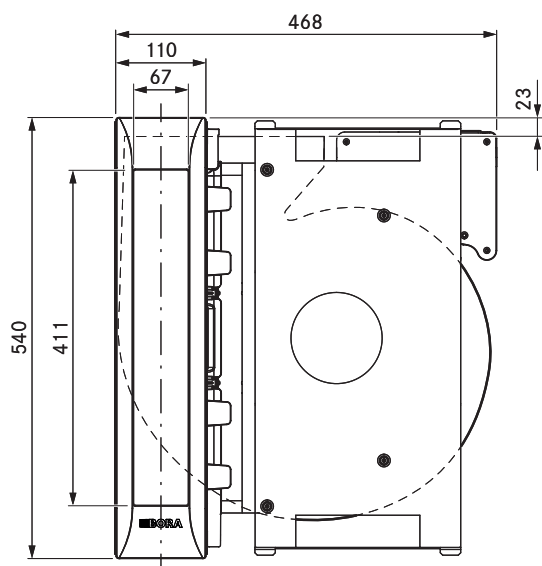
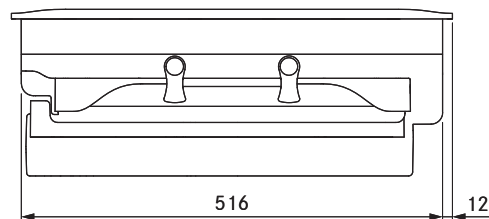
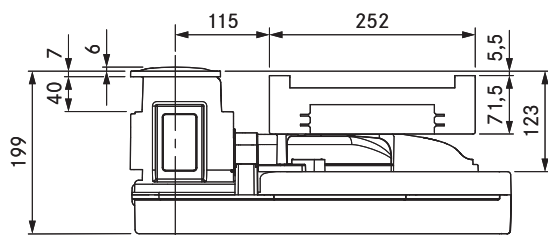
40.002.552.00 / CHF
3550.-
BORA Set PKIW3AB +
HIW1, Professional 3.0,
All Black



40.002.236.00 / CHF
1583.-
BORA PKCB3 HiLight
glass ceramic hob,
Professional 3.0



40.002.533.00 / CHF
1766.-
BORA PKCB3AB HiLight
glass ceramic hob,
Professional 3.0, All
Black



technical data

Supply voltage	220 – 240 V
Frequency	50/60 Hz
Maximum power consumption	550 W
Power supply cable length	2 m
Dimensions (width x depth x height)	468 x 540 x 199 mm
Weight (incl. accessories/packaging)	12.5 kg
Cooktop extractor power levels	1 – 9, P
duct connection	BORA Ecotube

Product description

- Intuitive control knob
- DLC (diamond-like-carbon) coated
- Automatic cover flap
- Premium design
- Simple cleaning
- Integrated grease drip pan
- Modular system
- Automatic extractor control
- Maximum storage space
- Integrated fan

Scope of delivery

- Cooktop extractor system with integrated fan PKAS3AB
- Control knob
- 4 x Pro knob ring All Black PKR3AB
- stainless steel grease filter
- Filter tray
- Maintenance tray
- cover flap
- connection cable for the control knob
- operating and installation instructions
- height adjustment plate set
- Mounting clamps
- Power supply cable with type E + F plugs

Accessories

- PKA1FF stainless steel grease filter
- PKA1VK cover flap
- PKA1FW filter tray
- UNLI type I power supply cable (AUS)
- UNLJ type J power supply cable (CH)
- UNLG type G power supply cable (GB-IE)
- UNLB type B power supply cable (PH)
- UNLH type H power supply cable (IL)

product- and planning instructions

- Suitable for use as a recirculation or exhaust system
- Compatible with all BORA Professional 3.0 cooktops and BORA Universal fan modules
- In addition, four knob ring All Black are included for the adjacent cooktops
- Use of an additional fan module is possible for very long or complex exhaust air channels
- The worktop height can be adjusted as necessary
- Worktop depth: ≥ 700 mm
- Installation type: flush or surface-mounted
- The drawers and/or shelves in the floor unit must be removable for maintenance and cleaning purposes
- The BORA Ecotube duct system is optimally tailored to the BORA cooktop extractors and guarantees 100% functionality and optimum performance
- The Professional cooktop extractor system can be combined with all BORA sockets
- Duct connection on the back of the appliance