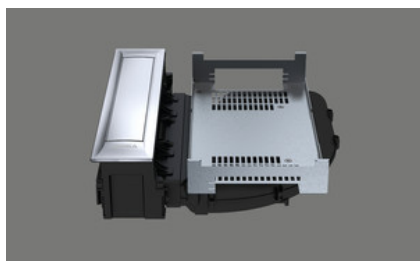


BORA hob extractor PKA3, Professional 3.0[> Web link](#)**Brief description**

Cooktop extractor

Mode of operation

Recirculated-air or exhaust air

Article no.

40.002.231.00

VRG

2.31

Price CHF

2152.- O excl. VAT

Product description**Product description BORA Professional 3.0 hob extractor PKA3**

Power control via control knob
 Power level display
 Electric shutter
 Shutter sensor
 Stainless steel grease filter
 Grease filter sensor
 Automatic hob extractor
 Automatic run-on
 Filter service indicator
 Interface for external devices
 Safety switch-off
 Connection option for two
 BORA universal fan modules

Technical data

Supply voltage
 220 - 240 V
 Frequency
 50 Hz
 Maximum power consumption
 550 W
 Weight (incl. accessories and packaging)
 9.25 kg
 Dimensions (width x depth x height)
 482 x 540 x 176 mm
 Power levels
 1-9, P
 Exhaust air connection
 BORA Ecotube 245 x 89 mm

Scope of delivery

Hob extractor PKA3
 Operating and assembly instructions
 Height compensation plate set
 Mounting clamps
 Control knob
 Stainless steel grease filter
 Filter tray
 Maintenance tray
 Closing flap
 Communication cable CAT 5
 Universal control unit
 Mains cable 1 m with plug type 12, 10 A
 Cable control knob - interface / fume cupboard
 Duct piece straight and duct piece bend

Planning information

Possible as recirculation or exhaust air system
 Can be combined with all BORA Professional hobs and BORA Universal fan modules
 Worktop height can be individually adjusted
 Worktop depth: ≥ 700 (in combination with the straight duct piece ≥ 650)
 Air ducting possible to the right or left
 Fan can be placed in the plinth area due to low installation height (100 mm) (only when using the ULS plinth fan).
 Mounting type: flush-mounted or top-mounted
 Universal control unit as central connection point can be placed easily and space-saving in the plinth area.
 Connection between fume cupboard and universal control unit by means of a CAT 5 communication cable.
 The drawers or shelves in the base unit must be removable for maintenance and cleaning purposes.
 The BORA Ecotube duct system is optimally matched to the BORA hob fume cupboards and guarantees 100% function and best performance. In the case of an exhaust air path longer than 6m or high pressure losses, an additional universal fan module must be used.

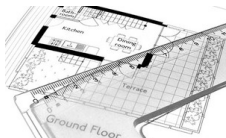
BORA hob extractor PKA3, Professional 3.0
[> Web link](#)

Planning note: With these units, the duct connection is designed for the BORA Ecotube duct system. To connect BORA Ecotube (connection 245 x 89 mm) with Naber connections (222 x 89 mm), an adapter (EFA, 40.001.779.00) is available / can be ordered separately. Can be freely combined with all BORA universal fan modules (can be ordered separately, fan motor not included in PKA3 scope of delivery).

Accessory
[You can find the complete range of accessories here > Weblink](#)

Optional accessories

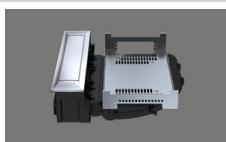
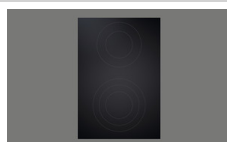

 40.001.767.00 / CHF 97.-
BORA socket USTJ

 40.002.034.00 / CHF 135.-
BORA socket USTJAB All Black

 80.100.016.00 / CHF 359.-
Ventilation planning

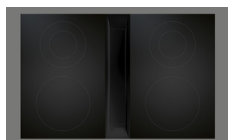
 80.100.017.00 / CHF 192.-
Revision of the planning

Other Articles
[You can find additional articles here > Weblink](#)

 40.002.292.00 / CHF 9632.-
BORA Set PKA3 + PKFI3 + PKT3, Professional 3.0

 40.002.294.00 / CHF 7067.-
BORA Set PKA3 + 2x PKCH3, Professional 3.0

 40.002.231.00 / CHF 2152.-
BORA hob extractor PKA3, Professional 3.0

 40.002.532.00 / CHF 1730.-
HiLight Professional Cooktop All Black

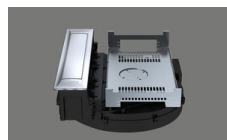
 40.002.291.00 / CHF 10341.-
BORA Set PKA3AB + 2x PKFI3 Professional 3.0

 40.002.293.00 / CHF 10852.-
BORA Set PKA3AB + PKFI3 + PKT3, Professional 3.0

 40.002.295.00 / CHF 8287.-
BORA Set PKA3AB + 2x PKCH3, Professional 3.0

 40.002.232.00 / CHF 3006.-
BORA Set PKA3AB All Black, Professional 3.0

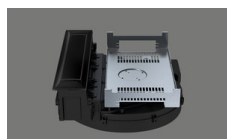
 40.002.296.00 / CHF 8377.-
BORA Set PKAS3 + 2x PKFI3 Professional 3.0

 40.002.298.00 / CHF 8888.-
BORA Set PKAS3 + PKFI3 + PKT3, Professional 3.0

 40.002.300.00 / CHF 6323.-
BORA Set PKAS3 + 2x PKCH3, Professional 3.0

 40.002.233.00 / CHF 3229.-
BORA Set PKAS3, Professional 3.0

 40.002.297.00 / CHF 9597.-
BORA Set PKAS3AB + 2x PKFI3AB Professional 3.0

 40.002.299.00 / CHF 10108.-
BORA Set PKAS3AB + PKFI3 + PKT3, Professional 3.0

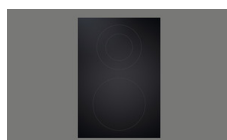
 40.002.301.00 / CHF 7543.-
BORA Set PKAS3AB + 2x PKCH3, Professional 3.0

 40.002.234.00 / CHF 4083.-
BORA Set PKAS3AB All Black, Professional 3.0

 40.002.239.00 / CHF 2574.-
BORA Set PKFI3 surface induction glass ceramic hob, Professional 3.0

 40.002.535.00 / CHF 2757.-
BORA Set PKFI3AB surface induction glass ceramic hob, Professional 3.0, All Black

 40.002.242.00 / CHF 3085.-
BORA PKT3 Teppan stainless steel grill, Professional 3.0

 40.002.539.00 / CHF 3268.-
BORA PKT3AB Teppan stainless steel grill, Professional 3.0, All Black

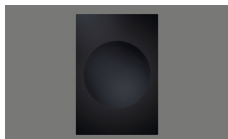
 40.002.237.00 / CHF 1547.-
BORA PKCH3 Hyper glass ceramic hob, Professional 3.0

 40.002.534.00 / CHF 1730.-
BORA PKCH3AB Hyper glass ceramic hob, Professional 3.0, All Black

 40.002.288.00 / CHF 3973.-
BORA Set PKA3 + ULS, Professional 3.0

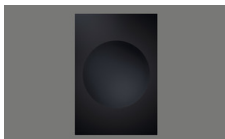
 40.002.238.00 / CHF 2238.-
BORA PKI3 induction glass ceramic hob, Professional 3.0

BORA hob extractor PKA3, Professional 3.0
[> Web link](#)


40.002.537.00 / CHF 2421.-
BORA PKI3AB induction glass ceramic hob, Professional 3.0, All Black



40.002.240.00 / CHF 2767.-
BORA PKIW3 Induction Glass Ceramic Wok, Professional 3.0



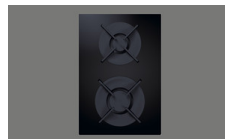
40.002.538.00 / CHF 2950.-
BORA PKIW3AB Induction Glass Ceramic Wok, Professional 3.0, All Black



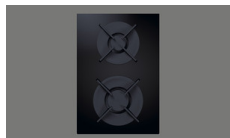
40.002.235.00 / CHF 1547.-
BORA PKC3 HiLight glass ceramic hob, Professional 3.0



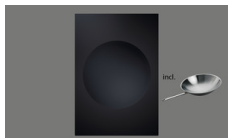
40.002.289.00 / CHF 4827.-
BORA Set PKA3AB + ULS, Professional 3.0



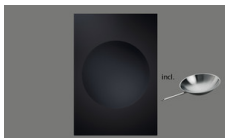
40.002.241.00 / CHF 2771.-
BORA PKG3 gas glass ceramic hob, Professional 3.0



40.002.536.00 / CHF 2954.-
BORA PKG3AB gas glass ceramic hob, Professional 3.0, All Black



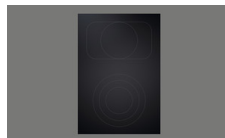
40.002.287.00 / CHF 3367.-
BORA Set PKIW3 + HIW1, Professional 3.0



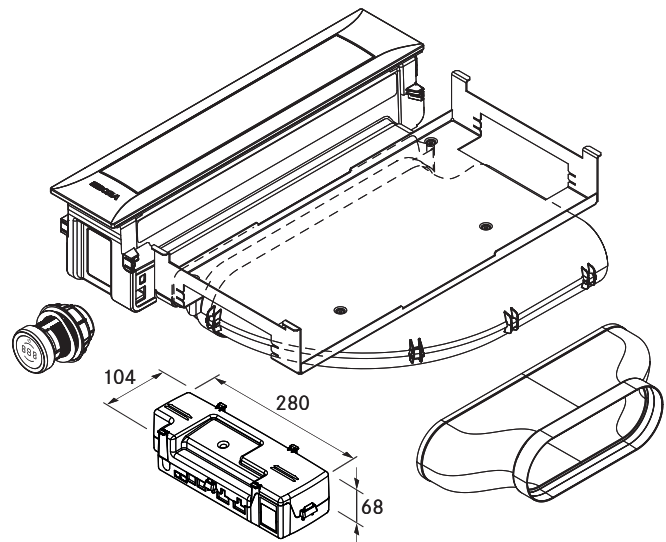
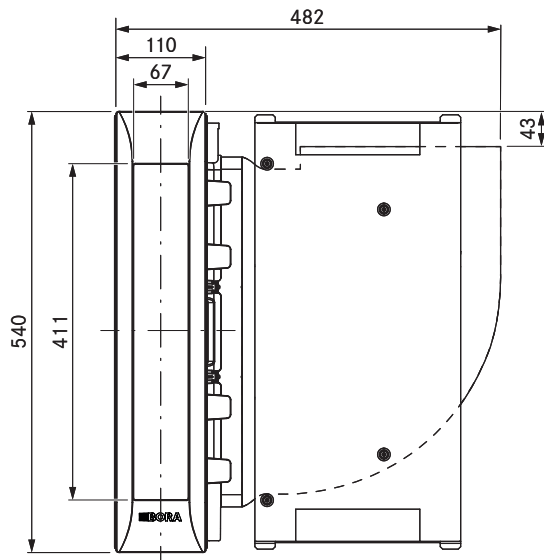
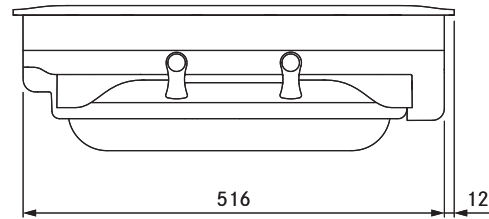
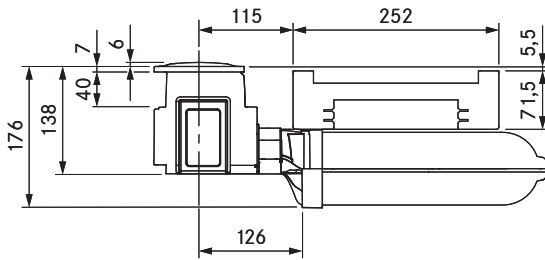
40.002.552.00 / CHF 3550.-
BORA Set PKIW3AB + HIW1, Professional 3.0, All Black



40.002.236.00 / CHF 1583.-
BORA PKCB3 HiLight glass ceramic hob, Professional 3.0



40.002.533.00 / CHF 1766.-
BORA PKCB3AB HiLight glass ceramic hob, Professional 3.0, All Black



technical data

Supply voltage	220 – 240 V
Frequency	50/60 Hz
Maximum power consumption	550 W
Power supply cable length	2 m
Dimensions (width x depth x height)	482 x 540 x 176 mm
Weight (incl. accessories/packaging)	9.25 kg
Cooktop extractor power levels	1 – 9, P
duct connection	BORA Ecotube

Product description

- Intuitive control knob
- Automatic cover flap
- Premium design
- Minimum volume
- Simple cleaning
- Integrated grease drip pan
- Genuine stainless steel grease filter
- Modular system
- Automatic extractor control
- Demo mode

Scope of delivery

- Cooktop extractor PKA3 with integrated 90° bend
- Straight duct element
- Control knob
- cover flap
- stainless steel grease filter
- Filter tray
- Maintenance tray
- CAT 5 communication cable
- Universal control unit
- connection cable for the control knob
- operating and installation instructions
- height adjustment plate set
- Mounting clamps
- Power supply cable with type E + F plugs
- Ecotube seal flat EFD

Accessories

- PKA1FF stainless steel grease filter
- PKA1VK cover flap
- PKA1FW filter tray
- UNLI type I power supply cable (AUS)
- UNLJ type J power supply cable (CH)
- UNLG type G power supply cable (GB-IE)
- UNLB type B power supply cable (PH)
- UNLH type H power supply cable (IL)

product- and planning instructions

- Suitable for use as a recirculation or exhaust system
- Compatible with all BORA Professional 3.0 cooktops and BORA Universal fan modules
- Use of an additional fan module is possible for very long or complex exhaust air channels
- The worktop height can be adjusted as necessary
- Worktop depth: ≥ 700 mm (in conjunction with the straight duct element ≥ 650 mm)
- Airflow possible to the right or left
- Fan can be positioned in the plinth area as a result of the low installation height (100 mm) (when using the ULS plinth fan only)
- Installation type: flush or surface-mounted
- Universal control unit as central connection point can be simply and compactly positioned in the plinth area
- The extractor and Universal control unit are connected by a CAT 5 communication cable
- The drawers and/or shelves in the floor unit must be removable for maintenance and cleaning purposes
- The BORA Ecotube duct system is optimally tailored to the BORA cooktop extractors and guarantees 100% functionality and optimum performance
- The Professional cooktop extractor system can be combined with all BORA sockets