

BORA S Pure PURSU

[> Web link](#)**Brief description**

Induction cooktop with extraction system

Mode of operation

Recirculated air

Article no.

40.002.390.00

VRG

5.56

Price CHF

2290.- O excl. VAT

Product description**BORA induction cooktop with integrated cooktop extractor (Recirculation) PURSU****Technical data****Supply voltage**

400 V 2N /3N

230 V

Frequency

50 Hz

Maximum power consumption

7,25 kW

Fuse protection / power connection

3 x 16 A

2 x 16 A

Equipment mass (without duct connections)

580 x 515 x 199 mm

Weight (incl. accessories / packaging)

20,2 kg

Material surface

SCHOTT CERAN

Cooktop**Induction cooking zone front (left / right)**

ø 95 mm / ø 210 mm

400 W / 2300 W

Power level

600 W / 3000 W

Induction cooking zone rear (left / right)

ø 140 mm / ø 175 mm

900 W / 1400 W

Power level

1350 mm / 2100 W

Power levels

1 - 9, P

Extraction system

Maximum air volume

608 m³ / h

Power levels

1 - 9, P

Circulating air connection

445 x 137 mm

Air circulation filter

Filter media : Activated carbon with ion exchange

Material: Filter panel with fine filter

Max. service life 150 h, 1 year

Product description**Cooktop**

Power level for every cooking zone

Timer cooking zones

Timer

Residual heat indicator

Pot detection

Pause function

Keep warm function

Child safety

Safety switch off

Demo mode

BORA S Pure PURSU

[> Web link](#)

Extraction system

sControl operation
Power level
Automatic extraction control
Follow-up automatic system
Cleaning lock
Filter change indicator
Mains power socket front

Scope of delivery

Induction cooktop with integrated cooktop extraction - PURSU recirculation
Inlet nozzle, PUED, black
Stainless steel grease filter PUEF
Active carbon filter PUAKE
Operating and installation instructions
Drilling template
Sealing strip
Height adjustment plate set
Housing cover mains connection
Mounting accessories for mains connection

Planning guidelines

Ensure adequate ventilation below the hob
Note that for induction hobs, induction-capable cooking utensils must be used.
The connection cable must be provided by the customer.
Front mains socket
Cleaning unit on slide rail (removable up to 80 mm) for connection to the rear wall.
Not compatible with the PULBTA telescopic slide

Accessory

[You can find the complete range of accessories here > Weblink](#)

Optional accessories



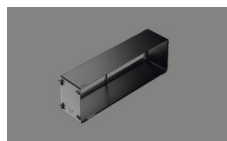
40.001.767.00 / CHF 97.-
BORA socket USTJ



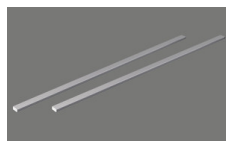
40.002.034.00 / CHF 135.-
BORA socket USTJAB
All Black



40.002.075.00 / CHF 399.-
Air purifier box PULB



40.002.077.00 / CHF 81.-
Air cleaning box
telescopic pull-out
PULBTA



40.002.157.00 / CHF 164.-
Side rails for hob depth
515 mm USL515



40.002.158.00 / CHF 261.-
Side rails for hob depth
515 mm All Black ULB
USL515AB

Other Articles

[You can find additional articles here > Weblink](#)


40.002.958.00 / CHF 3985.-
BORA X Pure Rough
PUXU2R



40.002.955.00 / CHF 3593.-
BORA X Pure PUXA2



40.002.956.00 / CHF 3759.-
BORA X Pure PUXU2



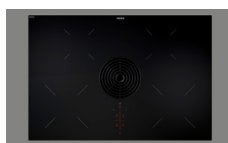
40.002.759.00 / CHF 3068.-
BORA M Pure PURMA



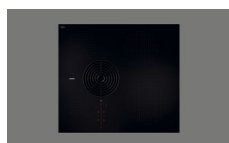
40.002.760.00 / CHF 3234.-
BORA M Pure PURMU



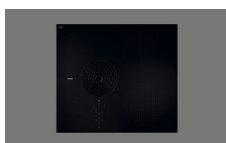
40.002.065.00 / CHF 2713.-
BORA Pure PURA



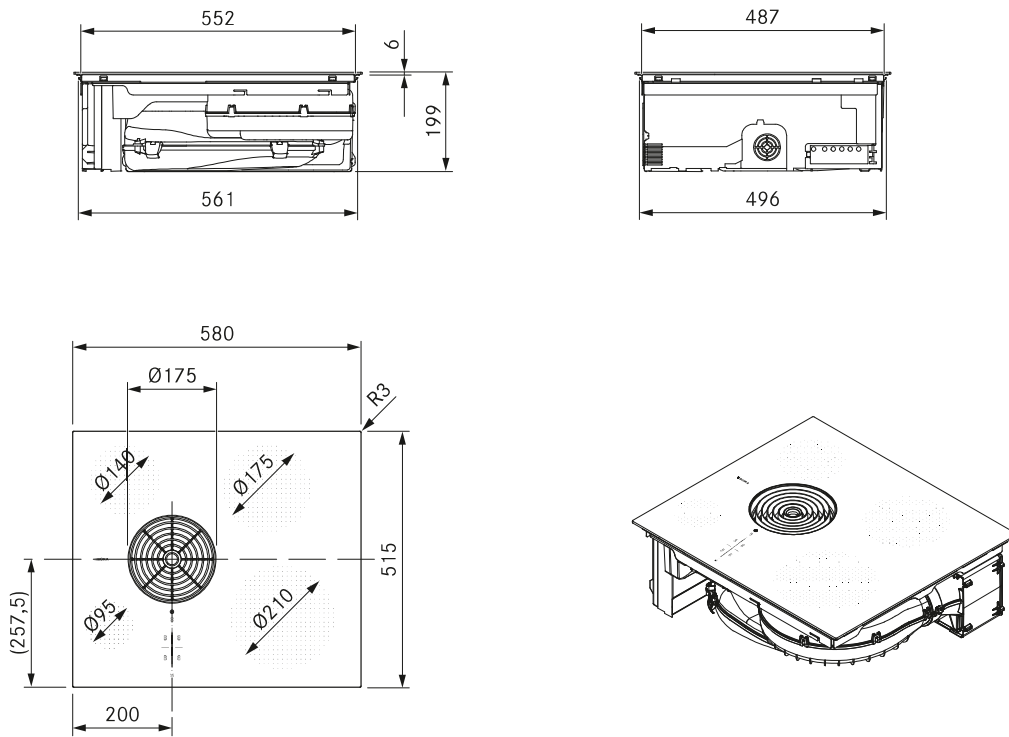
40.002.066.00 / CHF 2879.-
BORA Pure PURU



40.002.413.00 / CHF 2124.-
BORA S Pure PURSA



40.002.390.00 / CHF 2290.-
BORA S Pure PURSU



Technical data

Multiphase supply voltage	380 – 415 V 2N/3N
Single-phase supply voltage	220 – 240 V
Frequency	50 / 60 Hz
Maximum power consumption	7,25 kW
Three-phase power supply/fuse protection	3 x 16 A (standard connection)
Two-phase power supply/fuse protection	2 x 16 A
Single-phase power supply/fuse protection	1 x 32 A (1 x 20 A / 1 x 16 A)
Dimensions (width x depth x height)	580 x 515 x 199 mm
Weight (incl. accessories/packaging)	20,2 kg
Surface material	Glass ceramic
Cooktop extractor power levels	1 – 9, P
Cooktop power levels	1 – 9, P
Front left cooking zone output	400 W
Front right cooking zone output	2300 W
Rear left cooking zone output	900 W
Rear right cooking zone output	1400 W
Front left cooking zone power setting output	600 W
Front right cooking zone power setting output	3000 W
Rear left cooking zone power setting output	1350 W
Rear right cooking zone power setting output	2100 W
Front left cooking zone size	Ø 95 mm
Front right cooking zone size	Ø 210 mm
Rear left cooking zone size	Ø 140 mm
Rear right cooking zone size	Ø 175 mm
Size of exhaust opening	445 x 137 mm
Filter medium	Activated charcoal filter with ion exchanger
Filter material	Filter panel with fine filter
Maximum filter service life	150 h (1 year)

Product description

- Intuitive sControl control
- eSwap – easy filter change
- effective odour removal
- Minimum volume
- Simple cleaning
- Optimum cooktop use
- Maximum storage space
- Automatic extractor control
- Ultra-compact design
- Minimalistic design

Scope of delivery

- Induction cooktop with integrated cooktop extractor – Recirculation
- Air inlet nozzle black
- stainless steel grease filter
- activated charcoal filter
- operating and installation instructions
- Template for cut-out on rear wall
- sealing tape
- height adjustment plate set
- Housing cover power supply
- Installation accessories for the power supply

Accessories

- Air inlet nozzle black PUED
- Air inlet nozzle greige PUEDG
- Air inlet nozzle red PUEDR
- Air inlet nozzle jade green PUEDJ
- Air inlet nozzle orange PUEDO
- Air inlet nozzle blue PUEDB
- Stainless steel grease filter PUEF
- Activated charcoal filter PUAKF
- UDB25 sealing tape

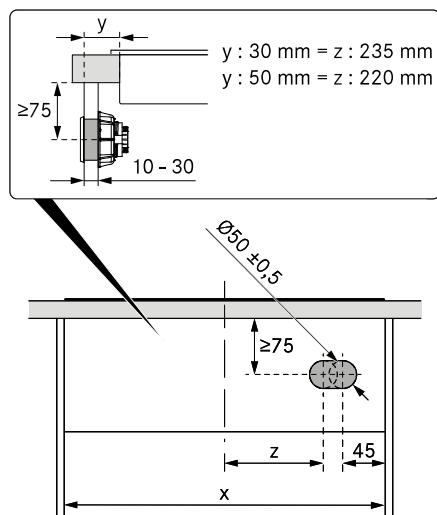
Product- and planning instructions

- The connection cable must be provided at the installation site
- Front power socket
- The air purification box is fitted with a telescopic pull-out (extension to 80 mm) for connection to the back wall of the unit
- Ensure sufficient ventilation of the area below the cooktop.
- Installation type: flush or surface-mounted
- The drawers and/or shelves in the floor unit must be removable for maintenance and cleaning purposes
- Please note that induction-compatible cookware must be used on induction cooktops
- The cooktop extractor system can be combined with all BORA sockets

Steckdosenpositionierung

Montagehinweise zu den BORA Steckdosen

S Pure



Wichtiger Planungshinweis:

- Bei Verwendung einer Eingriffsleiste ist zusätzlich auf ausreichenden Abstand für die Montage der Befestigungsmutter zu achten.

BORA UNIVERSALARTIKEL ZUBEHÖR



USTF

BORA Steckdose Typ F



USTFAB

BORA Steckdose Type F All Black

- Anschlussmöglichkeit für elektrische Küchenkleingeräte
- integrierte Kindersicherung
- Geeignet für DE, ES, IT, AT, LU, PT, RU, BR, SE, NL



USTE

BORA Steckdose Typ E



USTEAB

BORA Steckdose Typ E All Black

- Anschlussmöglichkeit für elektrische Küchenkleingeräte
- integrierte Kindersicherung
- Geeignet für FR, PL, DK, BE, CZ, SK



USTJ

BORA Steckdose Typ J



USTJAB

BORA Steckdose Typ J All Black

- Anschlussmöglichkeit für elektrische Küchenkleingeräte
- Geeignet für CH, LI
- Zwischenring im Lieferumfang



USTG

BORA Steckdose Typ G



USTGAB

BORA Steckdose Typ G All Black

- Anschlussmöglichkeit für elektrische Küchenkleingeräte
- Geeignet für UK, AE, SG
- Zwischenring im Lieferumfang



USTL

BORA Steckdose Typ L



USTLAB

BORA Steckdose Typ L All Black

- Anschlussmöglichkeit für elektrische Küchenkleingeräte
- Geeignet für IT, SM
- Zwischenring im Lieferumfang