

EFBH15, BORA Ecotube bend 15° flat horizontal

[> Web link](#)

Article no.
40.001.780.00

Price CHF
32.- D excl. VAT

Product description

EFBH15 BORA Ecotube bend 15° flat horizontal incl. sealing material

Technical data

Dimensions (W x D x H)

259 x 120 x 99 mm

Material characteristics

V0 according to UL94

B1 according to DIN 4102-1

Number of required seals*

1 x EFD

Weight

0,21 kg

* Gaskets are included in the price and delivery.

Accessory (ordered separately)

EFMS mounting bracket set

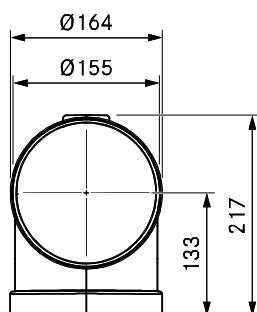
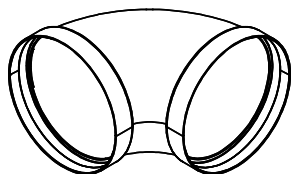
Planning tips

Moulded part with a shallow sleeve form

For use with units with BORA Ecotube duct connection (245 x 89 mm). To connect BORA Ecotube to Naber fittings (222 x 89 mm), an adapter (EFA, 40.001.779) is available / to be ordered separately.

ERB90

BORA Ecotube Bogen 90° rund



Technische Daten

Abmessungen (BxTxH)	155 x 217 x 217 mm
Materialeigenschaft	V0 nach UL94, B1 nach DIN 4102-1
Anzahl notwendiger Dichtungen	2 x ERD
Gewicht	0,37 kg

Zubehör

- Montagebügel Set ERMS

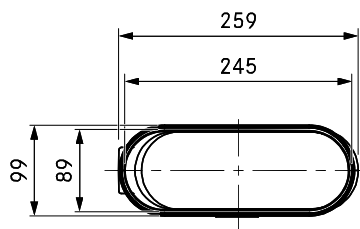
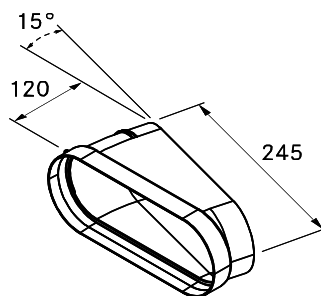
Planungshinweise

- Formteil mit zwei Muffenausbildungen rund

EFBH 15



BORA Ecotube Bogen 15° flach horizontal



Technische Daten

Abmessungen (BxTxH)	259 x 115 x 99 mm
Materialeigenschaft	V0 nach UL94, B1 nach DIN 4102-1
Anzahl notwendiger Dichtungen	1 x EFD
Gewicht	0,21 kg

Zubehör

- Montagebügel Set EFMS

Planungshinweise

- Formteil mit einer Muffenausbildung flach