

## EVOline Qi Charger

[> Web link](#)

**Article no.**  
40.002.437.00

**Price CHF**  
293.- H excl. VAT

## Product description

**EVOline Qi Charger: Qi charging station for integration into a worktop**, plastic, black

With the EVOline Qi Charger, all Qi-compatible devices can be charged on the same charging station without cables or accessories. It can be installed either under the worktop - so that the charging station is invisible - or attached to a standard opening with a diameter of 80 mm. The device to be charged is simply positioned in the appropriate place - pure minimalism. Charging is done inductively, i.e. the charging coil is only activated when it is connected to the device to be charged.

**Scope of delivery**

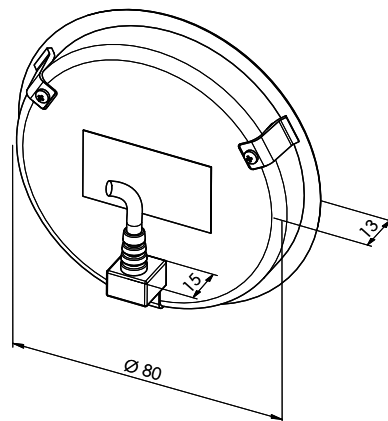
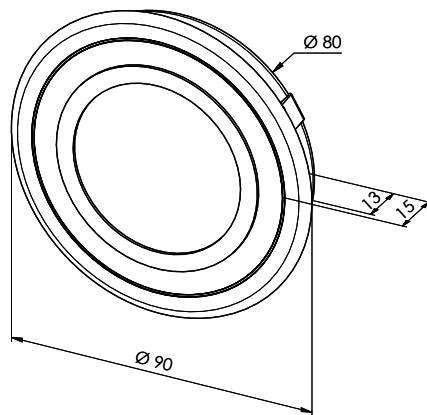
Qi charging coil according to WPC Spec. 1.2.2 "Qi".  
USB power adapter with Euro plug, 1 m USB cable  
Installation and operating instructions

**Technical data**

Operating voltage 9 V  
Power consumption (operation) max. 10 W  
Power consumption (standby) 0.2 W  
Operating temperature 17° C - 25° C  
Maximum operating temperature 0° C - 40° C  
Installation depth (incl. plug) 28 mm  
Installation / mounting: Invisible under the worktop or surface mounted

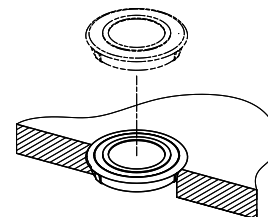
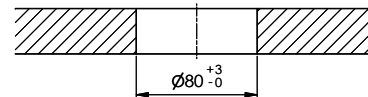
Concealed installation under the worktop: Surfaces must not be electrically conductive (e.g. metal, stainless steel). Recommendation for natural stone: Test before installation/milling, as it may contain traces of iron ore. The remaining thickness of the worktop should be a maximum of 3 mm at the cut-out (see drawing).

If necessary, remove the cover, shell, flap case or case of your smartphone so that wireless charging can work.



230V / 2.5A, T12, 0.35A

Ausschnitt für sichtbaren Einbau  
Découpe pour installation visible  
Ritaglio per installazione a vista



Ausschnitt für unsichtbaren Einbau  
Découpe pour installation invisible  
Ritaglio per installazione invisibile

