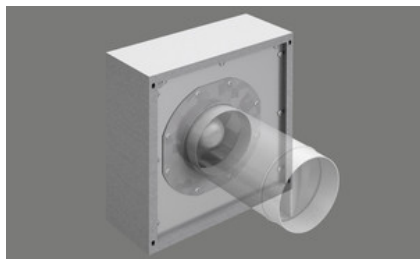


## BORA external wall fan ULA

[> Web link](#)



**Article no.**  
40.001.761.00

**VRG**  
5.56  
**Price CHF**  
1595.- O excl. VAT

## Accessory

You can find the complete range of accessories here [> Weblink](#)

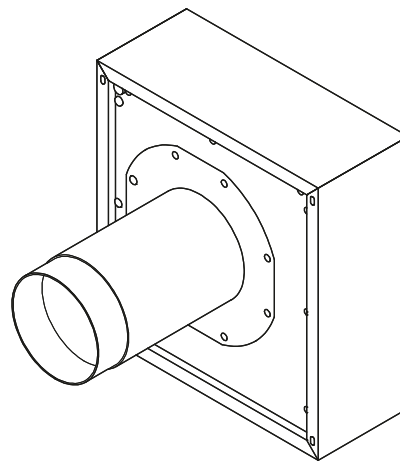
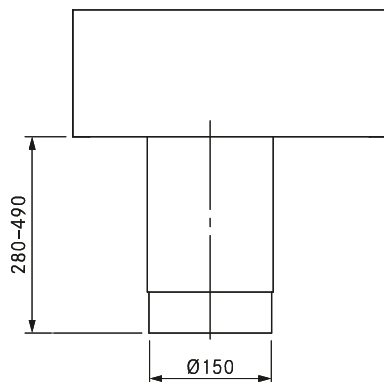
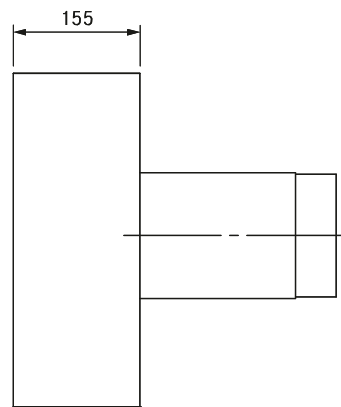
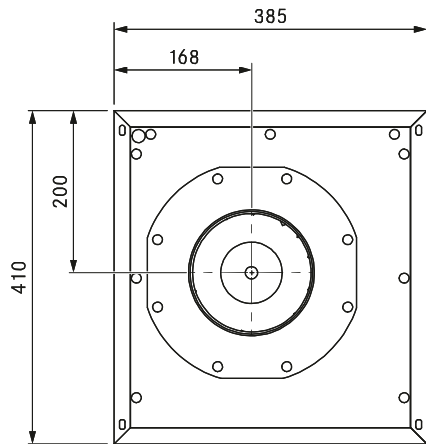
Optional accessories



40.001.599.00 / CHF 75.-  
BORA mains cable EC  
10 m



40.001.600.00 / CHF 62.-  
BORA control line EC 10  
m



### Technical data

Supply voltage	220 - 240 V
Frequency	50 Hz
Power consumption	149 W
Current consumption	1.26 A
Power supply cable length	10 m
Control line length	10 m
Dimensions (width x depth x height)	385 x 155 x 410 mm
Weight (incl. accessories/packaging)	16.5 kg
Casing material	Galvanized steel / stainless steel
duct connection	Ø 150 mm
Maximum ambient temperature	70 °C
Maximum flow volume	940 m³/h
Maximum static pressure	456 Pa

### Product description

- Energy-saving fan with EC technology
- Complete BORA system

### Scope of delivery

- ULA external wall fan
- Telescopic installation duct with integrated non-return valve
- Air repellent rail
- installation instructions
- Empty duct Ø 40 mm x 400 mm for cable passage
- 1,25 m EPDM sealing tape
- 4 x Ferrite sleeve

### Accessories

- Universal extension of UVNLE10 mains cable EC 10 m
- Universal extension of UVSLE10 control line EC 10 m

### product- and planning instructions

- If there are two fan modules in an air duct system, a minimum clearance of 3 m must be maintained between the two fans
- A minimum downward clearance of 40 cm is required for the outflow
- For installation on the outside of the building
- Suitable for wall thicknesses of 280 mm to 490 mm
- If required, a KG duct with Ø 200 mm should be pre-installed in the external wall
- Air outlet downward
- Fixing elements must be provided at the installation site