

**Daneo DAN 40IF/12**
[> Weblink](#)


**Montaggio**  
Lavelli a filo top / Lavelli sopraiano

**Modello**  
DAN 40IF/12

**Materiale**  
Acciaio inox 18/10

**N. di articolo**  
10.104.204.00

**Dimensioni base**  
45 cm

**Piletta**  
Salvaspazio 3½"

**Finitura**  
Opaco

**Prezzo in CHF**  
1187.- A IVA esclusa

**Dimensioni lavello**  
400x400x175mm

**Raggi d'angolo**  
22 mm

**sFlow™ sistema di scarico e troppopieno**


Technologia di di troppopieno: Griglietta superiore - tipo S



Troppopieno coperto sFlow con placchetta a ribalta

**Premontaggio della piletta**

Montaggio della piletta in fabbrica



Advant

**Distributore - opzioni di montaggio**

Posizione a scelta

**Prezzi** (aggiornati al 15.10.24 / IVA esclusa)

| Modello           | Materiale                 | Piletta         | N. di articolo | Prezzo in CHF |           |
|-------------------|---------------------------|-----------------|----------------|---------------|-----------|
| Daneo DAN 40IF/12 | Acciaio inox 18/10, Opaco | Salvaspazio 3½" | 10.104.204.00  | 1187.-        | > Weblink |
|                   |                           | 3½" TouchFlow   | 10.104.203.00  | 1385.-        | > Weblink |
|                   |                           | 3½" Tipo        | 10.104.205.00  | 1146.-        | > Weblink |

**Descrizione del prodotto**
**1 versione di prodotto, 2 metodi di montaggio**

I modelli IF presentano un grande vantaggio: possono essere posati sia a filo top che sopraiano.

**Montaggio a filo top: Consiglio per la scelta del piano di lavoro**

Consigliamo il montaggio nei piani di lavoro in ceramica, granito, pietra artificiale (per es. Corian o Varicor) oppure in legno massiccio. Sconsigliamo la posa in pannelli di truciolato rivestiti.

**Accessorio**

Accessori opzionali



> Weblink  
40.000.912.00 / CHF 106.-  
Vaschetta, forato



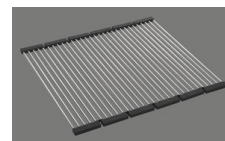
> Weblink  
40.001.289.00 / CHF 106.-  
Vaschetta, non forato



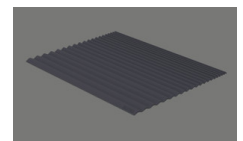
> Weblink  
40.000.909.00 / CHF 151.-  
Tagliere, in vetro, bianco



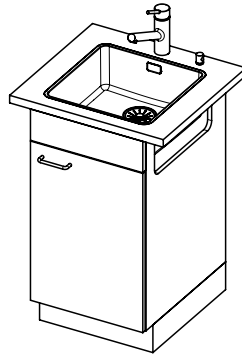
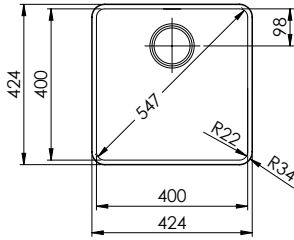
> Weblink  
40.001.277.00 / CHF 151.-  
Tagliere, sintetico



> Weblink  
40.001.138.00 / CHF 125.-  
Inox Pad

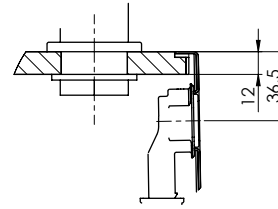


> Weblink  
40.002.008.00 / CHF 51.-  
Maro tappetino scolapiatti, Dark Grey

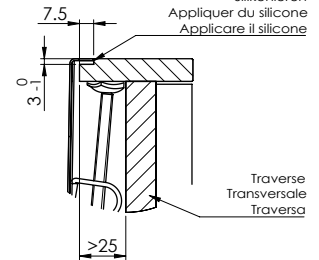


Für 12mm Arbeitsplatte.  
 Pour plan de travail de 12mm.  
 Per piano di lavoro da 12mm.

X (1:2)

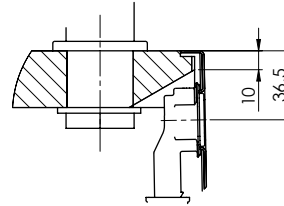


Y (1:2)

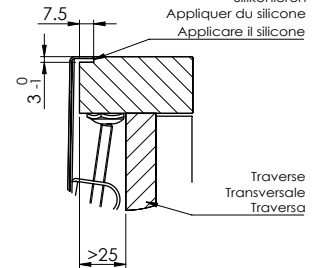


Für 13 - 30mm Arbeitsplatte.  
 Pour plan de travail de 13 - 30mm.  
 Per piano di lavoro da 13 - 30mm.

X (1:2)

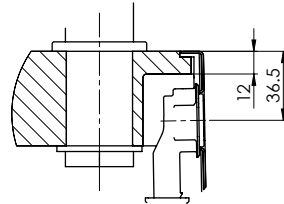


Y (1:2)

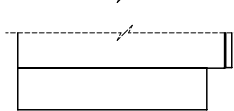
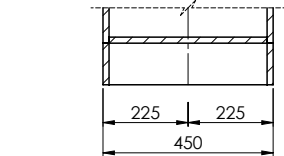
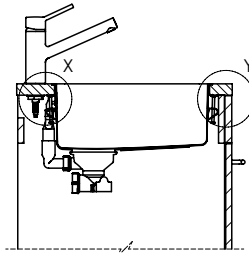
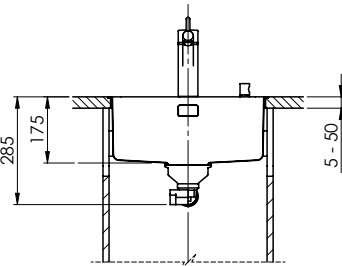
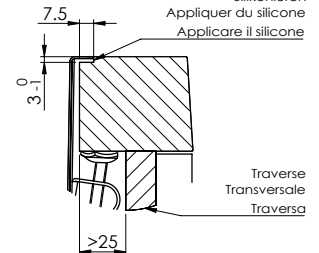


Für 13 - 50mm Arbeitsplatte.  
 Pour plan de travail de 13 - 50mm.  
 Per piano di lavoro da 13 - 50mm.

X (1:2)



Y (1:2)



Bei der Planung die Traverse im Möbel beachten!

Faites attention à la barre transversale dans les meubles lors de la planification!

Presta attenzione alla traversa nei mobili durante la pianificazione!

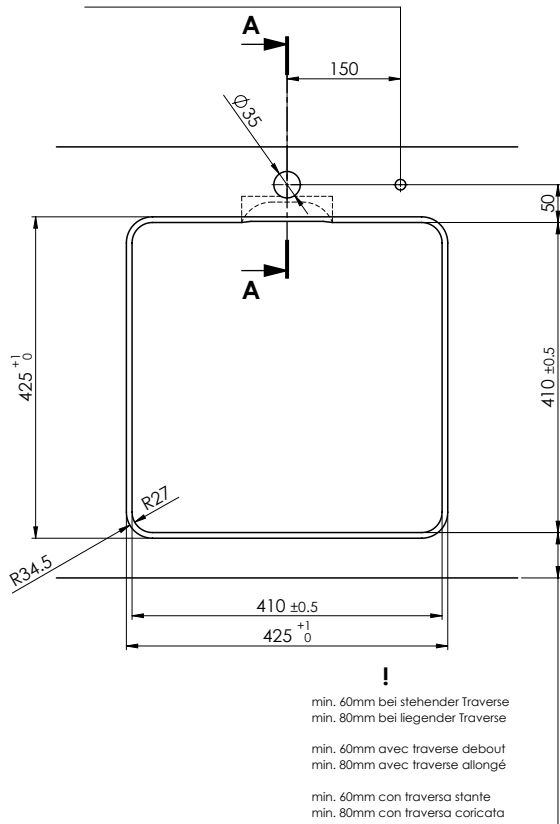
Vom flächenbündigen Einbau in beschichteten Spanplatten raten wir ab.  
 Nous vous déconseillons le montage à fleur sur des panneaux de particules enduits.  
 Sconsigliamo il montaggio a filo top in pannelli di truciolato laminato.

# DAN 40IF/12

Bohrung für Zug- und Druckknöpfe  $\varnothing 14$   
 Bohrung für Drehknopf  $\varnothing 25$

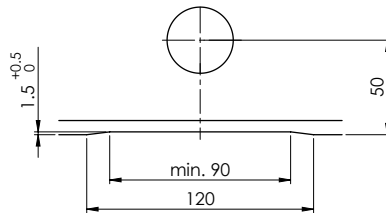
Trou pour boutons et Pousoirs de commande  $\varnothing 14$   
 Trou pour bouton rotatif  $\varnothing 25$

Foro per Pomelli tiranti e Pomelli pulsanti  $\varnothing 14$   
 Foro per Pomolo girevoli  $\varnothing 25$

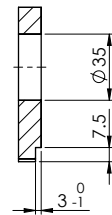


Ausschnitt für flächenbündigen Einbau - Randbreite 12mm:  
 Mesure de coupe pour montage à fleur - Bord de 12mm de largeur:  
 Intaglio per montaggio a filo top - Larghezza bordo 12mm:

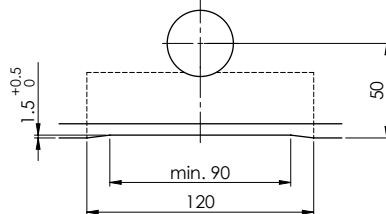
Für 12mm Arbeitsplatte.  
 Pour plan de travail de 12 mm.  
 Per piano di lavoro da 12 mm.



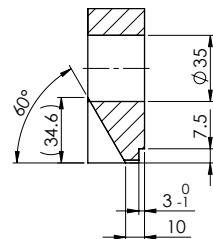
A-A (1 : 2)



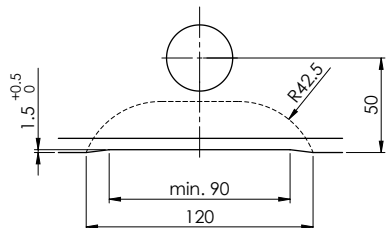
Für 13 - 30mm Arbeitsplatte.  
 Pour plan de travail de 13 - 30mm.  
 Per piano di lavoro da 13 - 30mm.



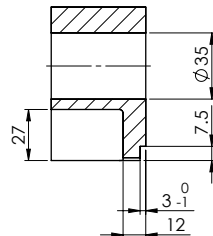
A-A (1 : 2)



Für 13 - 50mm Arbeitsplatte.  
 Pour plan de travail de 13 - 50mm.  
 Per piano di lavoro da 13 - 50mm.



A-A (1 : 2)



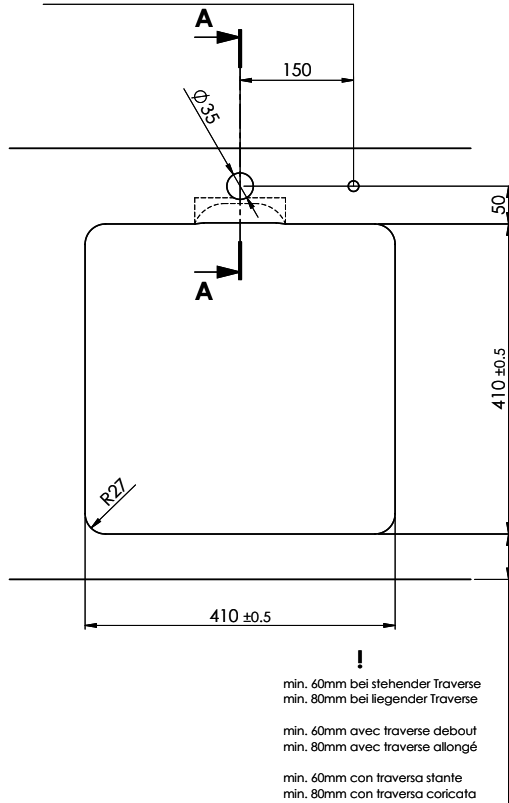
# DAN 40IF/12

**Ausschnitt für flach aufliegender Einbau - Randbreite 12mm:**  
**Mesure de coupe pour montage en appui - Bord de 12mm de largeur:**  
**Intaglio per montaggio sopra piano - Larghezza bordo 12mm:**

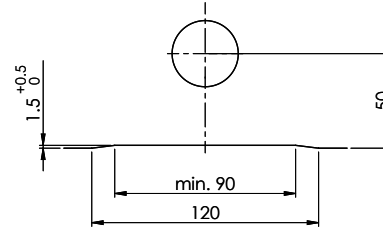
Bohrung für Zug- und Druckknöpfe ø14  
 Bohrung für Drehknopf ø25

Trou pour boutons et Pousoirs de commande ø14  
 Trou pour bouton rotatif ø25

Foro per Pomelli tiranti e Pomelli pulsanti ø14  
 Foro per Pomolo girevoli ø25

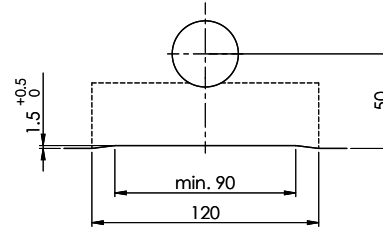


Für 12mm Arbeitsplatte.  
 Pour plan de travail de 12 mm.  
 Per piano di lavoro da 12 mm.



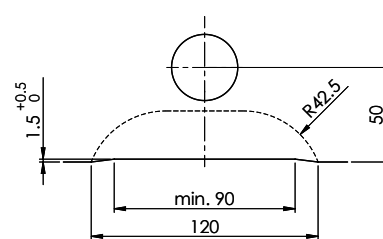
A-A (1 : 2)

Für 13 - 30mm Arbeitsplatte.  
 Pour plan de travail de 13 - 30mm.  
 Per piano di lavoro da 13 - 30mm.



A-A (1 : 2)

Für 13 - 50mm Arbeitsplatte.  
 Pour plan de travail de 13 - 50mm.  
 Per piano di lavoro da 13 - 50mm.



A-A (1 : 2)